

Central Community Center Nonoichi Community Center Citizen Activity Center



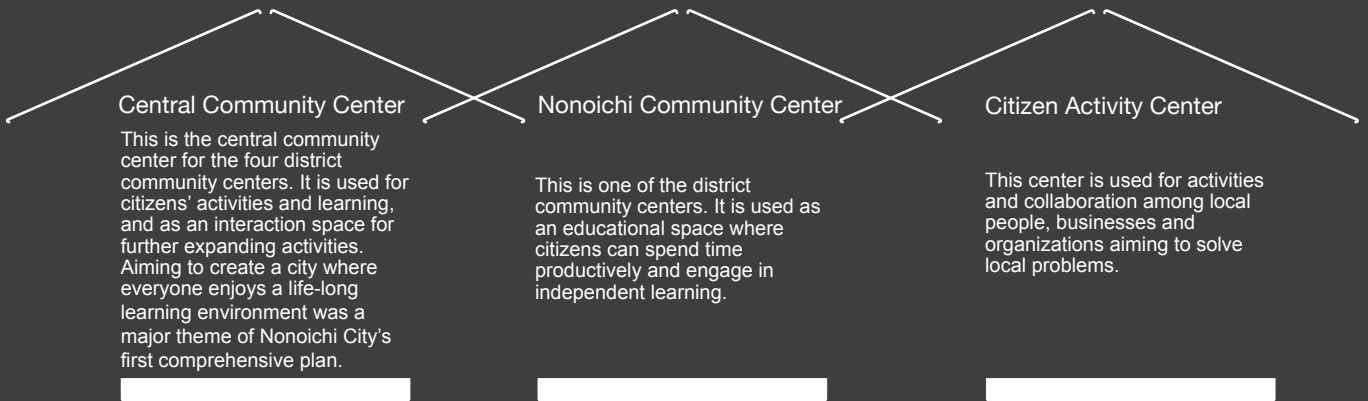
にぎわいの里
ののいち
カミイノ

中央公民館
野々市公民館
市民活動センター



カ
ミ
ノ
ノ
イ
チ
ノ
ミ
ヤ
ノ
リ

中央公民館
野々市公民館
市民活動センター



About Camino

Camino: "Road" in Spanish

This area is located close to the important historic roads, Hokkoku Kaidō and Hakusan-ōmichi, and from long ago has prospered as an important location for transport. We hope to open new roads for development while respecting this history and culture.

This name was chosen from 151 submissions from people in Ishikawa Prefecture.

*Hokkoku Kaidō – During the Edo period, the Hokkoku Kaidō was the most important travel route after the Gokaidō (the Edo five routes: Tōkaidō, Nakasendō, Nikkōkaidō, Okushūkaidō, Kōshūkaidō). The Kaga domain made modern-day Nonoichi the first stop on the Kanazawa Castle-Kyoto route, and horses and people were always kept ready here for travellers.

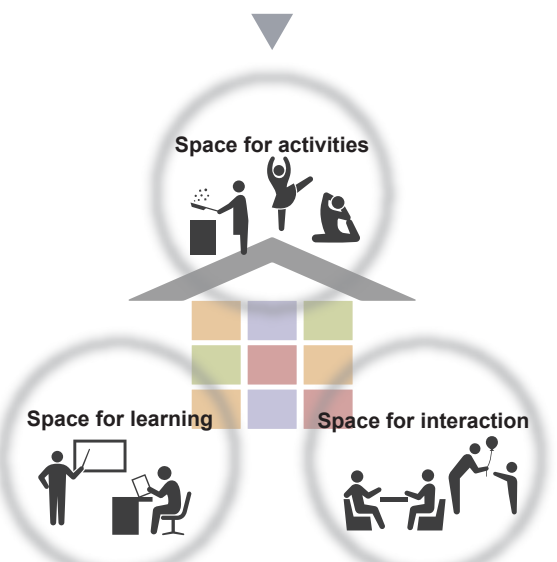
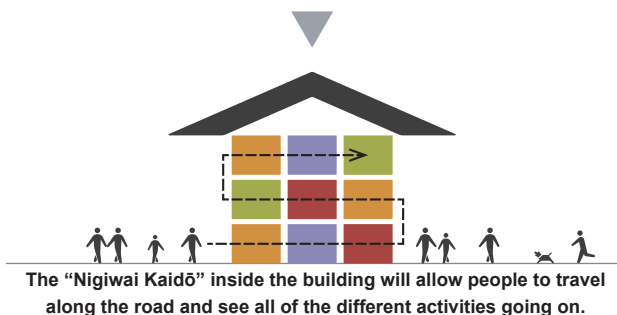
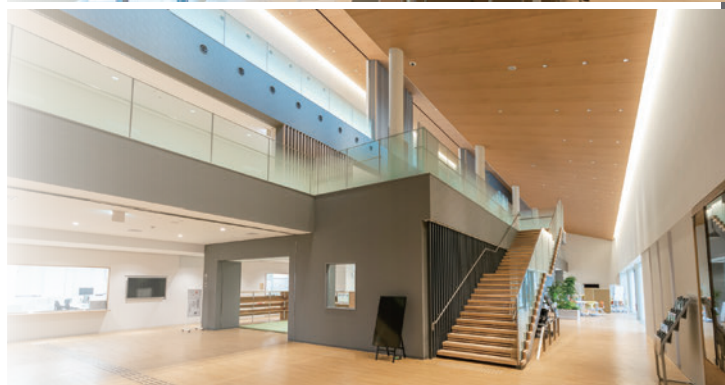
*Hakusan-ōmichi – The 24-kilometer road from Ōno, Kanazawa City to Shirayamahime Shrine, Hakusan City. It was a key road for the sacred Mount Hakusan, and was well-travelled.

MEETING, CONNECTING, BRANCHING OUT NONOICHI

- ✓ Providing a place of learning for people of all ages
- ✓ Creating a hierarchy-free environment for interaction and exchange
- ✓ Connecting local people
- ✓ Community-building through citizen collaboration

From Hokkoku Kaidō to “Nigiwai Kaidō” (Lively Road)

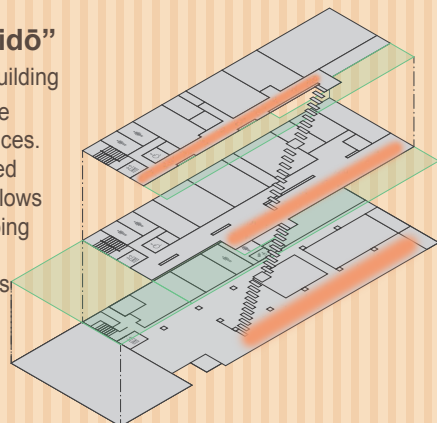
This area is located near Hokkoku-Kaidō and Hakusan-ōmichi and has always thrived as a major passageway with many people coming and going and inns and shops lining the streets. To recreate this thriving environment we created the “Nigiwai Kaidō” in this facility. There are rooms for learning and different activities throughout this multi-level structure connected by the “Nigiwai Kaidō” to bring liveliness to the whole building.



A new thriving area for activities and person-to-person interactions will be created.

The “Nigiwai Kaidō”

is a route through the building which connects all of the different rooms and spaces. This open and connected nature of the building allows people to see what’s going on in other parts of the building and encourages interaction and a lively atmosphere.



Notes for using this facility:

- Lively is good, disturbing others is not. Please do not yell, shout, or threaten others.
- Do not bring dangerous items or animals into the facility.
- You break it, you buy it! If you damage the facilities, you will be liable to reimburse us for the damage.
- Follow staff instructions.



CITIZEN INTERACTIVE SALON

Size 136 m²

CITIZEN ACTIVITY ROOM

Capacity 39 people

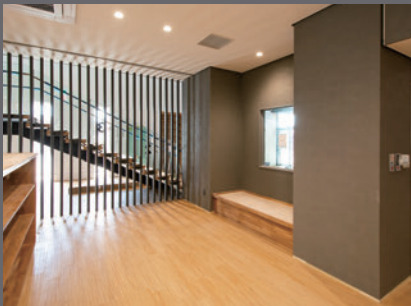
Size 58 m²

CITIZEN MEETING ROOM

Capacity 4 x 6 people

Size 56 m²

This is the central space for interaction, collaboration, and informational exchange between people, universities, and companies.



LIBRARY

A space for reading books in between activities and a play space for children.

Size 34 m²



AUDIO-VISUAL ROOM

This room is for conferences, performances and presentations using audio-visual aids.

Capacity 57 people

Size 89 m²



HALL

This hall is for presentations and performances and can be opened to the front yard to create one large space for events. The hall can be separated into two spaces.

Capacity 300 people

Size 252 m²

FLOOR MAP

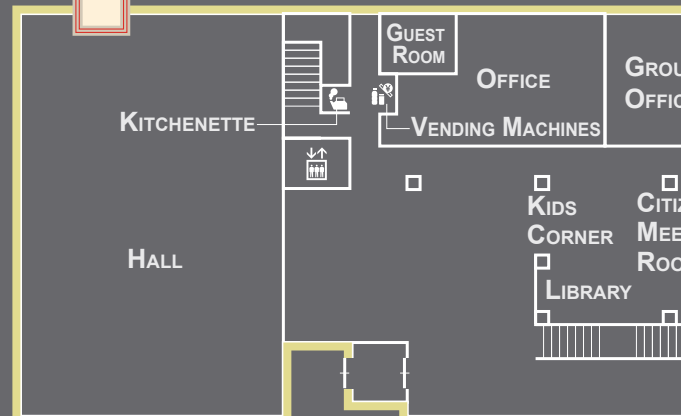
3



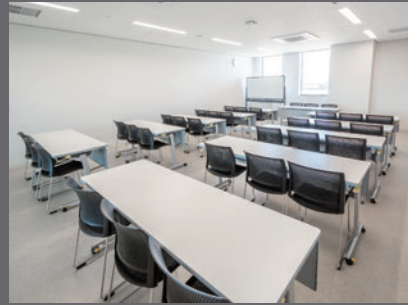
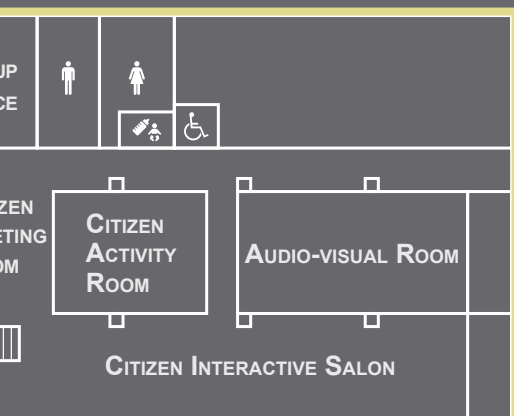
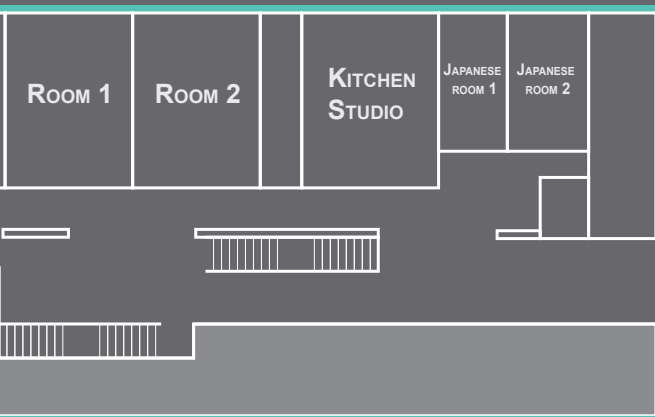
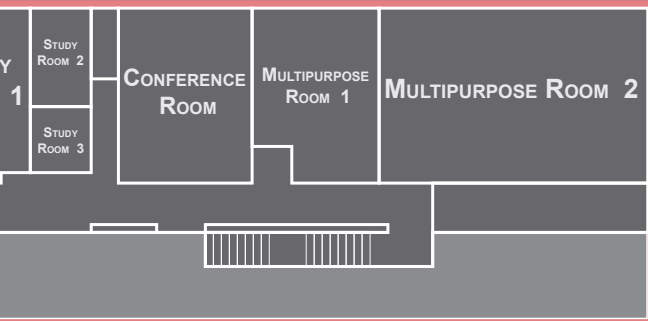
2



1



BUILDING DETAILS	Building name	Community & Citizen Activity Center	
	Building use	Meeting space	
	Structure & size	Structure	Steel construction
		Size	Three-storied
		Building area	1,664.13 m ²
		Total floor space	3,060.16 m ²
	Maximum height	14.80 m	



STUDY ROOM 1, 2, 3

These rooms are for meetings, seminars, and club activities. They are different sizes and accommodate different numbers of people.

Capacity 33 / 12 / 6 people

Size 59 / 19 / 13 m²



CONFERENCE ROOM

This room is for seminars and lectures.

Capacity 33 people

Size 73 m²



MULTIPURPOSE ROOM 1, 2

These rooms are sound and vibration proof and can be used for activities such as dance and yoga as well as for choral groups or music groups.

Capacity 30 / 60 people

Size 61 / 139 m²



ROOM 1, 2

The rooms have sinks and can be used for flower arrangement and calligraphy activities. The room can be divided into two.

Capacity 30 / 30 people

Size 69 / 69 m²



KITCHEN STUDIO

The kitchen studio can be used not just for cooking but also for various workshops. It can be opened and used in conjunction with the adjoining Japanese room.

Capacity 30 people

Size 73 m²



JAPANESE ROOM 1, 2

The Japanese rooms can be used for tea ceremony, go, and shogi games. It can be opened and used in conjunction with the adjoining kitchen studio.

Capacity 20 / 20 people

Size 30 / 36 m²



にぎわいの里
のいち
カミ
ノ

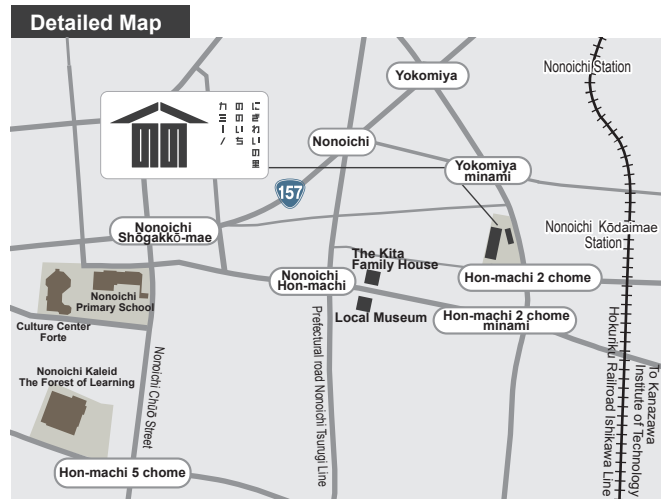
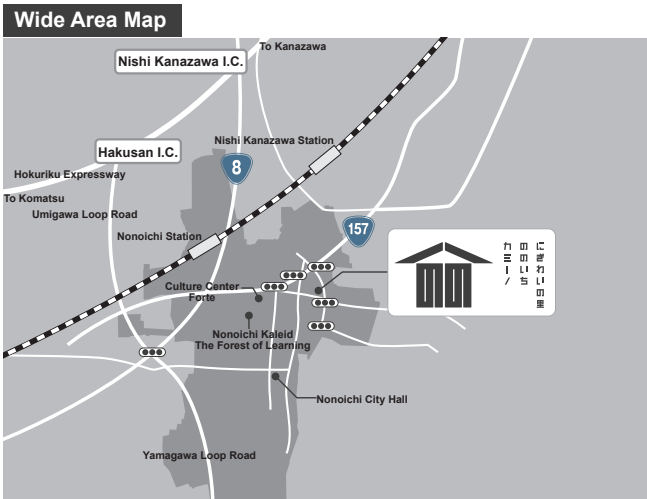
中央公民館
野々市公民館
市民活動センター

Address

Central Community Center & Nonoichi Community Center
TEL: 076-248-0521
FAX: 076-248-3649

Citizen Activity Center
TEL: 076-248-7301
FAX: 076-248-7316

1-20 Hon-machi 2-chōme, Nonoichi, Ishikawa, 921-8815



Open

9:00 am - 10:00 pm

Closed

Mondays, National holidays,
New Year holidays, and
other special holidays

Access

From JR Nonoichi Station

- Take the community bus Notty northern route from Nonoichi-eki Minami-guchi (Nonoichi Station South Exit) and get off at the Camino stop. (about 15 min.)
- About 6 min by car. (about 3 km.)

From JR Kanazawa Station

- Take Hokuriku Rail Road bus #40, or #41, or #42 and get off at Nonoichi Chuō (Central Nonoichi). (about 30 min.)
- About 13 min by car. (about 6.5km)

**From Hokuriku Rail Road Ishikawa line
Nonoichi Kōdai-mae Station (Nonoichi,
Kanazawa Institute of Technology Station)**

- Take the community bus Notty central route from Kōdai-mae-eki (Kanazawa Institute of Technology Stop) and get off at Camino. (about 2 min.)
- About 3 min. on foot. (about 250m)

From Hokuriku Expressway

- 14 min. from Hukusan Interchange. (about 7 km)
- 10 min. from Kanazawa Nishi Interchange (about 5 km)