

九
三
一
ノ
の
い
ち
に
ぎ
わ
い
の
里



Camino: “Road” in Spanish

This area is located close to the important historic roads, Hokkoku Kaidō and Hakusan-ōmichi, and from long ago has prospered as an important location for transport. We hope to open new roads for development while respecting this history and culture.

This name was chosen from 151 submissions from people in Ishikawa Prefecture.

*Hokkoku Kaidō – During the Edo period, the Hokkoku Kaidō was the most important travel route after the Gokaidō (the Edo five routes: Tōkaidō, Nakasendō, Nikkōkaidō, Okushūkaidō, Koshūkaidō). The Kaga domain made modern-day Nonoichi the first stop on the Kanazawa Castle-Kyoto route, and horses and people were always kept ready here for travellers.

*Hakusan-ōmichi – The 24-kilometer road from Ōno, Kanazawa City to Shirayamahime Shrine, Hakusan City. It was a key road for the sacred Mount Hakusan, and was well-travelled.

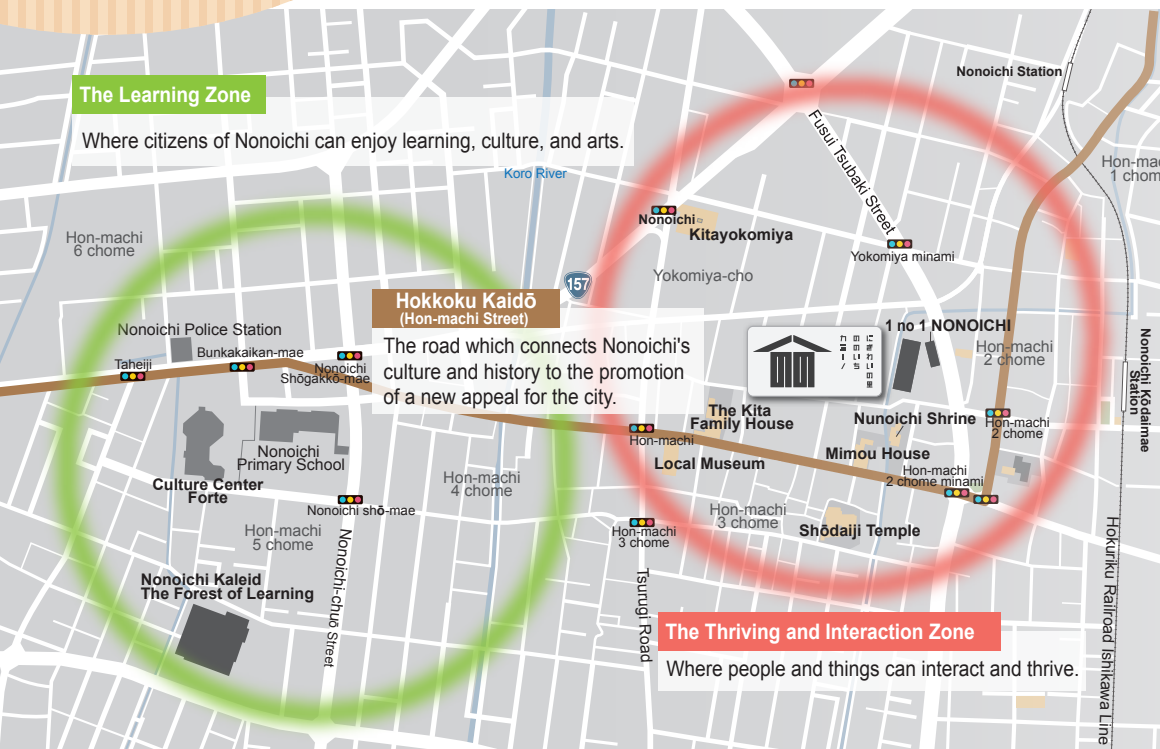
INTERACTING, MEETING, THRIVING NONOICHI

中央公民館
野々市公民館
市民活動センター



Camino is a public space which aims to bring activity and liveliness to the city with the help of citizens.

Camino consists of two facilities. The Community Space supports the learning of citizens and the various activities at the community center. To promote further activities and collaboration, this facility is not only for citizens but also local companies and organizations. The Commercial Space was designed to promote Nonoichi to both local people and the wider world, and includes a café and a shared office space.

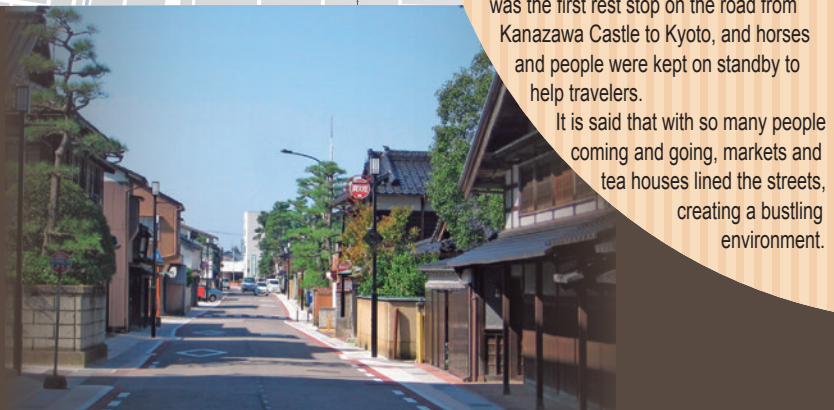


About the Hokkoku Kaidō

The Hokkoku Kaidō is one of Japan's many roads dating from the Edo period. It was the main route linking the Hokuriku region during the Edo period. Nonoichi was the first rest stop on the road from Kanazawa Castle to Kyoto, and horses and people were kept on standby to help travelers. It is said that with so many people coming and going, markets and tea houses lined the streets, creating a bustling environment.

Hokkoku Kaidō Project

Camino was established as part of the Hokkoku Project, which aims to create new charm for Nonoichi. The city created new cultural attractions while maintaining its history and culture. These include the culture center Forte, library Kaleido, and community center Camino, all of which people can use freely. With this area as the focal point, the goal is to create a lively, thriving environment in the city.





COMMUNITY SPACE

This building is a community center and a citizen activity center, which together support the activities of people of all ages. There is a main hall which holds 300 people, an interactive activity salon that facilitates communication, lecture rooms, and a kitchen.

BUILDING DETAILS	Building name	Community Space		
	Building use	Meeting space		
	Structure & size	Structure	Steel construction	
		Size	Three-storied	
		Building area	1,664.13 m ²	
		Total floor space	3,060.16 m ²	
	Maximum height	14.80 m		



Central Community Center

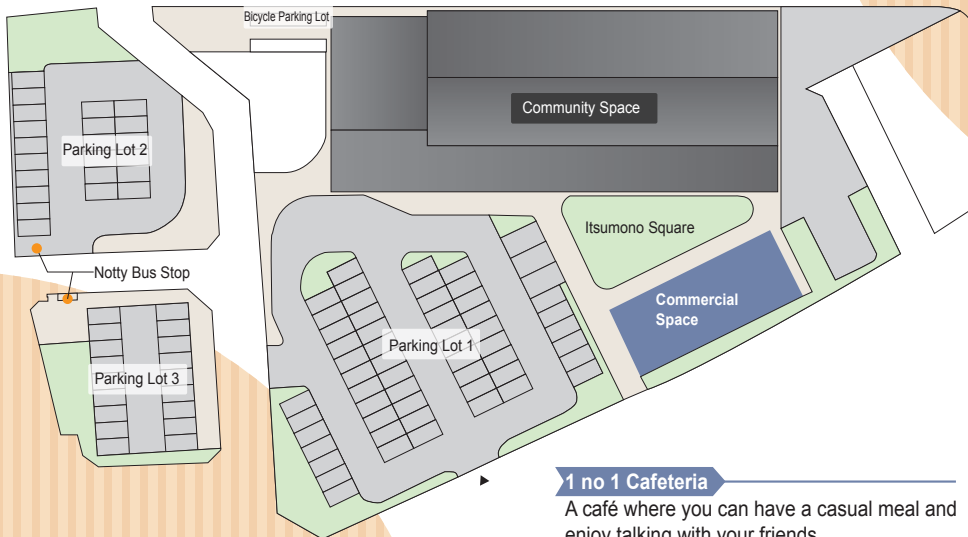
This is the central community center of the four district community centers. It is used for citizens' activities, learning, and as an interaction space for further expanding activities.

Nonoichi Community Center

This is one of the district community centers. It is used as an educational space where citizens can engage in independent learning.

Citizen Activity Center

This center is used for activities and collaboration among local people, businesses, and organizations.



BUILDING DETAILS	Building name	Commercial Space (1 no 1 NONOICHI)		
	Building use	Store, Office, Restaurant		
	Structure & size	Structure	Steel construction	
		Size	One-story	
		Building area	297.14 m ²	
		Total floor space	296.98 m ²	
	Maximum height	5.09 m		



1 no 1 Cafeteria

A café where you can have a casual meal and enjoy talking with your friends.

Nonoichi Products

You can buy Nonoichi souvenirs, daily-use items and original items that are only available here.

Shared Kitchen

A space for local people who want to open a restaurant or food shop to try out their products.

1 no 1 NONOICHI

Marché (Itsumono Square)

We will have events here for people who want to get together and sell things. You can apply to have a booth here.

Nonoichi Tourism Information

This is the Nonoichi Tourist Information Center. We provide information about the city and its events.

Shared Office

Citizens and new businesses can use this as their office. We aim to create a new thriving business community.

“1 no 1 (ichi no ichi)” is a place that sells local Nonoichi products and promotes tourism. There is a café, product sales counter, shared office space, and kitchen. The idea is to create a thriving space for interactions between people, things, and information, within the concept of “work, play, eat, and meet.”

COMMERCIAL SPACE





に
せ
ら
い
の
里
の
ち
ま
ち
ノ
ノ
イ
チ

Address

Community Space

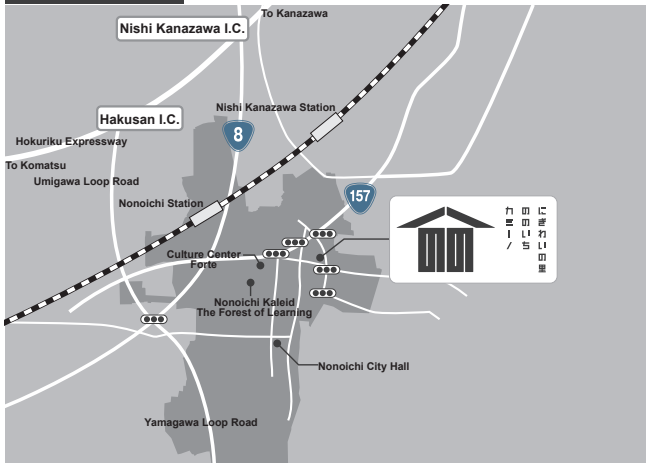
Central Community Center & Nonoichi Community Center
TEL: 076-248-0521
FAX: 076-248-3649

Citizen Activity Center
TEL: 076-248-7301
FAX: 076-248-7316
1-20 Hon-machi 2-chōme, Nonoichi, Ishikawa, 921-8815

Commercial Space

1 no 1 Nonoichi
TEL: 076-248-7332 (Nonoichi Tourism Association)
TEL: 076-259-1167 (1 no 1 Café)
1-21 Homachi 2-chōme, Nonoichi, Ishikawa, 921-8815

Wide Area Map



Access

From JR Nonoichi Station

- Take the community bus Notty northern route from Nonoichi-eki Minami-guchi (Nonoichi Station South Exit) and get off at the Camino stop. (about 15 min.)
- About 6 min by car. (about 3 km.)

From JR Kanazawa Station

- Take Hokuriku Rail Road bus #40, or #41, or #42 and get off at Nonoichi Chuō (Central Nonoichi). (about 30 min.)
- About 13 min by car. (about 6.5km)

From Hokuriku Rail Road Ishikawa line Nonoichi Kōdai-mae Station (Nonoichi, Kanazawa Institute of Technology Station)

- Take the community bus Notty central route from Kōdai-mae-eki (Kanazawa Institute of Technology Stop) and get off at Camino. (about 2 min.)
- About 3 min on foot. (about 250m)

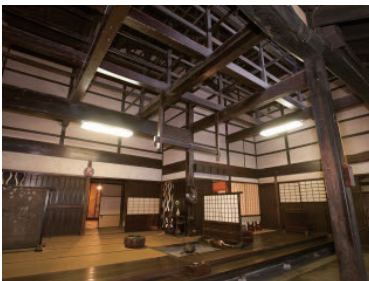
From Hokuriku Expressway

- 14 min. from Hakusan Interchange. (about 7 km)
- 10 min. from Kanazawa Nishi Interchange (about 5 km)

Detailed Map



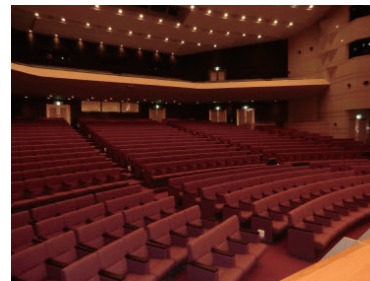
Places around Camino



The Kita Family House

This house was a lamp oil shop during the Edo period, and a sake store during the Bakumatsu period. It is the oldest *machiya* (traditional Japanese town house) in the Kaga area and features latticework and traditional walls called *sodekabe*.

Open: 9:00 am - 4:00 pm
Closed: Open all year
Fee: 400 yen



Forte Culture Center

This facility has large and small concert halls, a tea ceremony room, and a traditional Japanese room. Various events such as concerts and theater performances are held here.

Open: 9:00 am - 10:00 pm
Closed: 1st & 3rd Wednesdays
(If not a national holidays)
Year end & new year holidays



Local Museum

This is a museum housed in a traditional Japanese merchant/farmhouse. The front of the house is in a *machiya* (merchant) style and the rest of the structure and layout are farmhouse style. Daily items and farm implements are displayed. There is a tea room next to the museum.

Open: 9:00 am - 5:00 pm
Closed: Mondays (if not a national holiday)



Nonoichi Kaleido The Forest of Learning

This new style learning space includes, in addition to the library, music and kitchen studios. There is a café and park adjacent.

Open: 9:00 am - 10:00 pm
Closed: Wednesdays
Year end & new year holidays